

---

# The Future of Education

Elvira Carzaniga

EDUCATION LEAD, MICROSOFT ITALIA

CRUI - Rome, 15 January 2020







---

**The world is  
rapidly changing**



# The Fourth Industrial Revolution

Widespread disruption

New skills in demand

1780

1870

1970

TODAY

Steam.  
SCALING  
POWER

Electricity.  
SCALING  
TIME

Electronics.  
SCALING  
INFORMATION

Digital/AI.  
SCALING TO EVERY  
PERSON

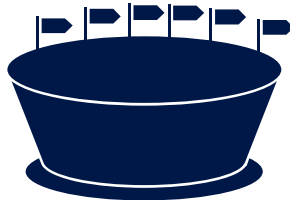
# A prediction for 2020

Smart Factories



1PB/Day

Stadiums



2TB/Day

Smart Devices



1.5GB/Day

Smart Houses



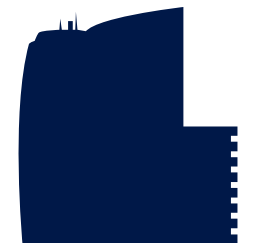
50GB/Day

Automated Cars



5TB/Day

Smart Offices



150GB/Day

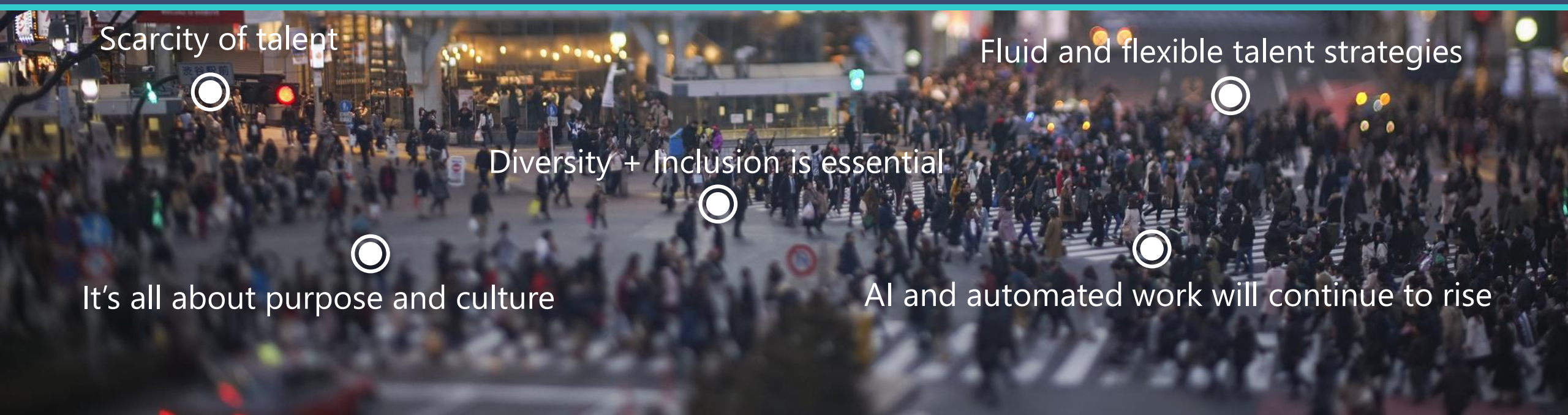




—  
Modern work has changed

---

# The Workplace Trends



Scarcity of talent



Fluid and flexible talent strategies



Diversity + Inclusion is essential



It's all about purpose and culture



AI and automated work will continue to rise





A top-down view of a group of people sitting on a light-colored floor, engaged in learning or work. They are using various devices including laptops, tablets, and smartphones. The scene is dimly lit, with a blue tint. The text "Learning has changed" is overlaid in the center in a white, sans-serif font, with a small white horizontal line above it.

—  
Learning has changed

---

# The future looks very different for our students



65% of students in grade school will perform jobs that have not been invented yet



47% of current jobs are expected to be taken over by machines during the next two decades



65K new IT jobs by 2024, most in cloud-related technology fields



Only 33% of the world's demand for employees with technology skills is being met



In less than a decade, 77% of jobs will require technology skills



—  
PHI·GI·TAL / *n*







# Cybersecurity



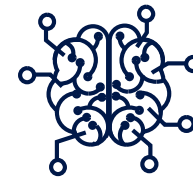


—  
The Future of  
Education is now!



---

# The engines of our future



**Artificial Intelligence**



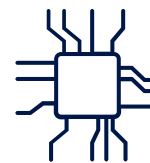
**Internet of Things**



**Mixed Reality**



**Blockchain**



**Quantum Computing**



# Universities are a central point of influence

## Governmental Agencies



## Technology Partners



## Industry Leaders

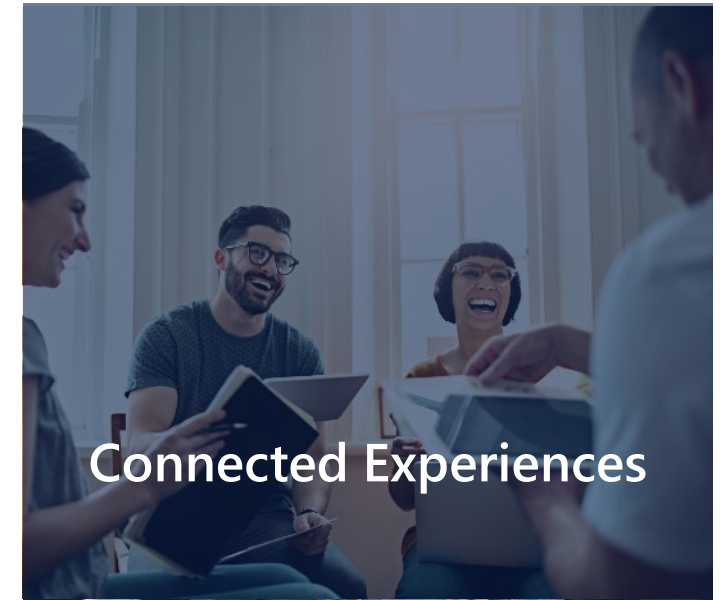


Technology, skills, thought leadership, research partnerships



---

# Transformative outcomes of 21<sup>st</sup> century education

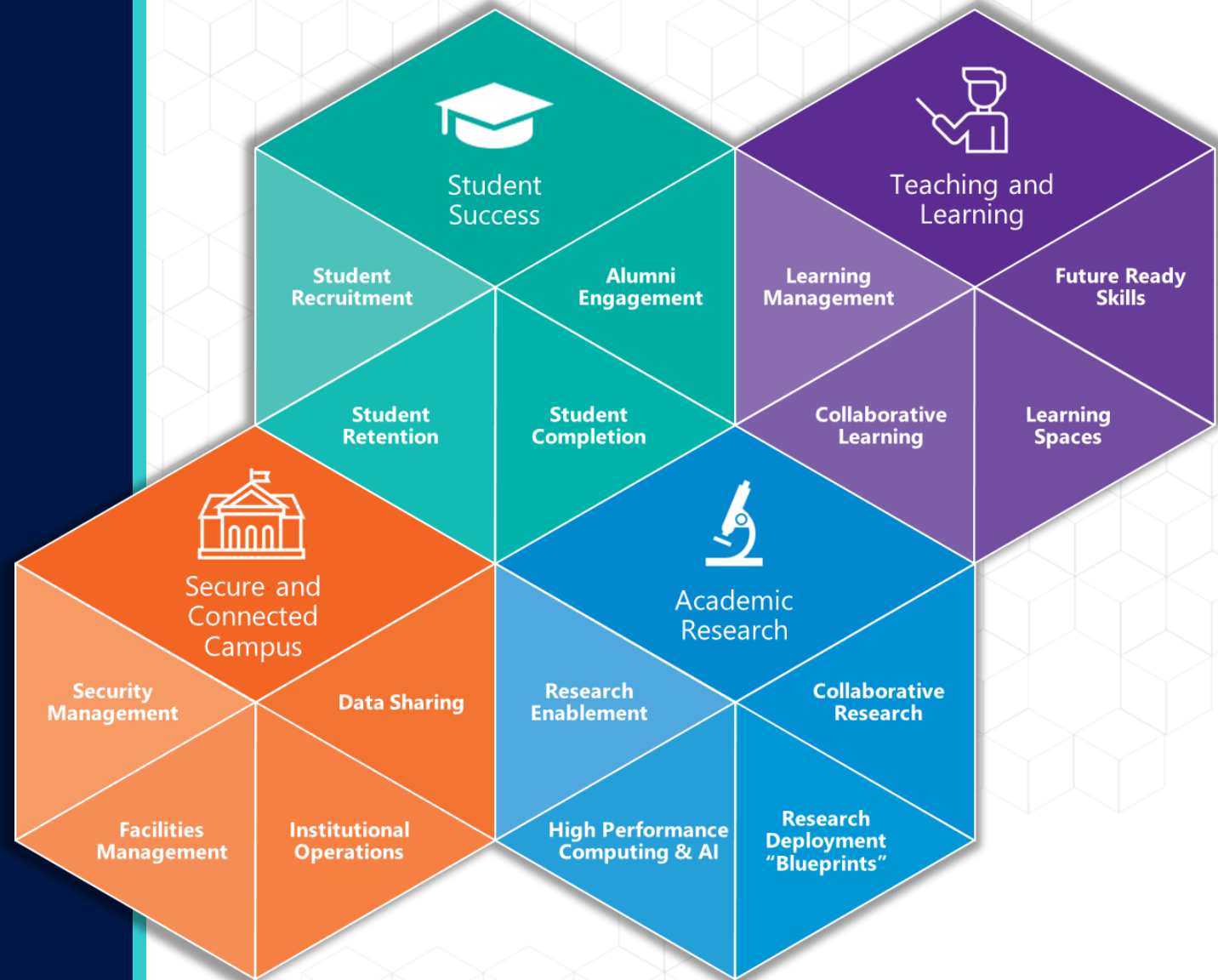




# Education Transformation Framework

The Microsoft Education Transformation Framework provides practical advice to develop a strategy for digital transformation; supporting new approaches to:

- Manage student success
- Modernize teaching and learning
- Empower research
- Provide efficient and effective physical and digital infrastructure

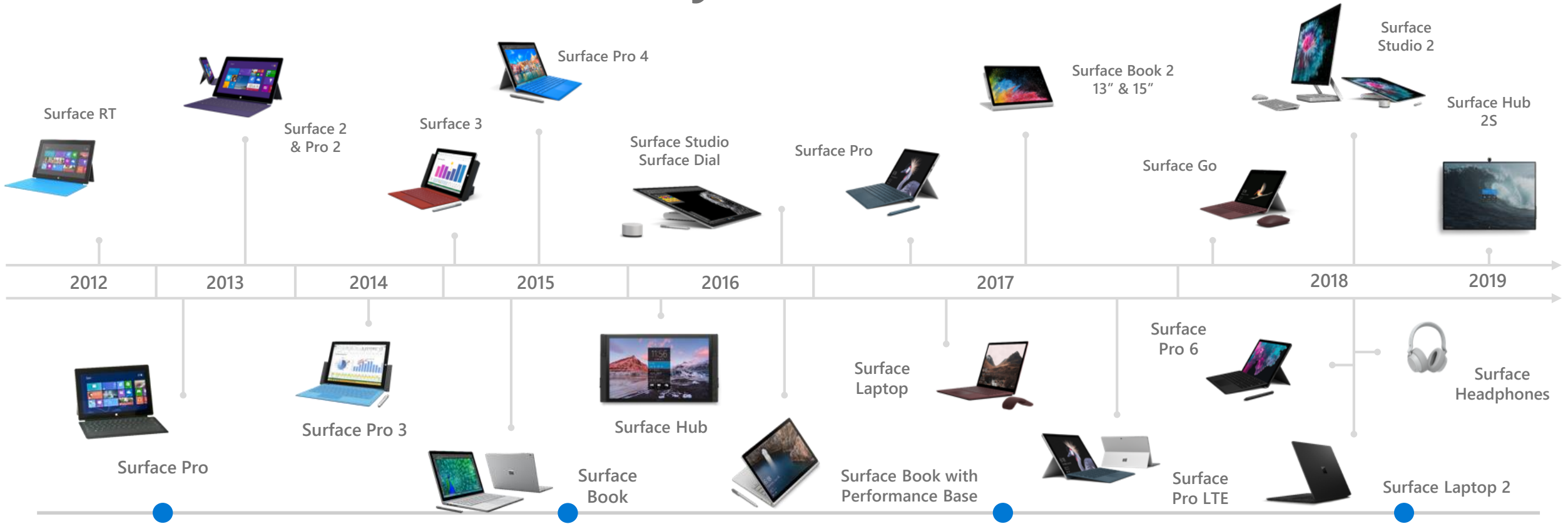


—  
Thank you





# A history of innovation

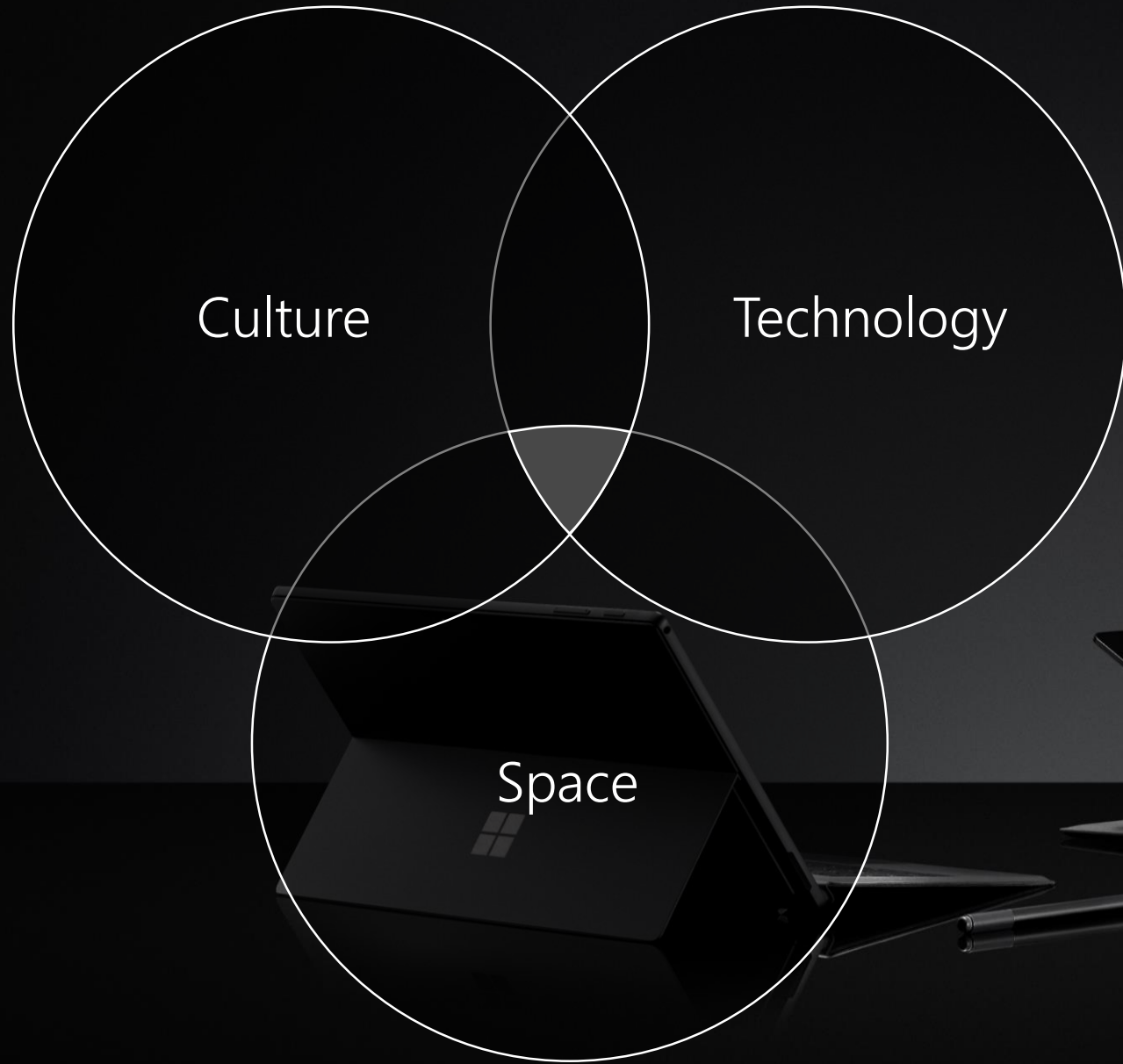


Surface began almost 20 years ago as an exploration of the power of touch screens and tablets.

Since then, the Surface line has become a central point for Microsoft's innovation in personal productivity.

With the introduction of Surface devices eight years ago, Microsoft balanced beauty and power, form and function to create your perfect everyday device.

Today's Surface brings together the best of Microsoft, combining all the power of the Windows platform into a laptop that people love.



**People at  
the center**



# Our Surface Family

## Pro

### Ultra-light versatile

The iconic Surface 2-in-1, now even faster and more versatile with USB-A & USB-C.

## Book

### Powerhouse performance

Ultimate performance in a laptop form factor with 13.5" or 15" detachable touchscreen.

## Studio

### The ultimate creative studio

The most immersive and powerful Surface desktop with a 28" fully adjustable touch-screen.

## Laptop

### Style and speed

The perfect everyday laptop is now even faster. Choose from two durable keyboard finishes with 13.5" or 15" touchscreens.

## Go

### Portable power

The smallest, most affordable Surface 2in1 with a 10" touchscreen. Available with 4G LTE



# Meet our new additions



## Surface Pro X

### Ultra-thin and always connected

Sleek design and ultimate mobility combine in our thinnest 2-in-1 ever. Stay connected and work more efficiently anywhere with blazing-fast LTE<sup>2</sup> and an edge-to-edge 13" touchscreen.

## Surface Laptop 3

### Style and speed

The perfect everyday laptop is now even faster, with up to 11.5 hours battery life.<sup>1</sup> Choose from rich colors,<sup>2</sup> two durable keyboard finishes, and 13.5" or 15" touchscreens.

## Surface Pro 7

### Ultra-light and versatile

More power and greater versatility team up like never before in our classic, ultra-light and versatile 2-in-1 that transforms from laptop, to tablet, to portable studio. Now with USB-C™, new Surface Pro 7 adapts to the ways you work better than ever.

<sup>1</sup> Up to 11.5 hours of battery life based on typical Surface device usage. Testing conducted by Microsoft in September 2019 using preproduction software and preproduction 13.5" Intel® Core™ i5, 256GB, 8 GB RAM and 15" Intel® Core™ i7, 512GB, 16 GB RAM devices.

Battery life varies significantly with settings, usage and other factors. See [surface.com](https://surface.com).

<sup>2</sup> Colors available on select models only; available colors may vary by market and store.



# Promo per clienti education con CRUI MS CASA-EES

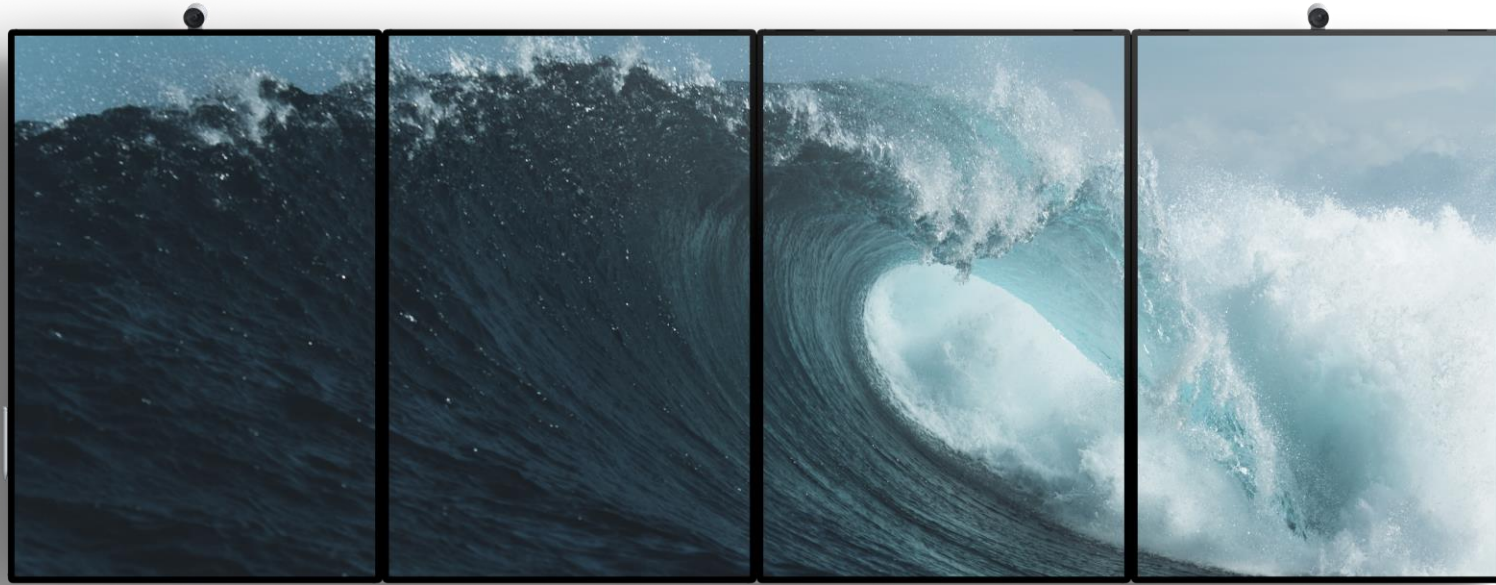
E' stata attivata una promo per l'acquisto di Surface dedicata ai clienti Education con CASA-EES attivo in CRUI.

La promo è valida presso tutti i reseller autorizzati alla rivendita Surface, citando il codice "CRUITA".

Per ulteriori info contattare:

Alessandro Simonetti – Microsoft Surface Specialist

[alessandro.simonetti@microsoft.com](mailto:alessandro.simonetti@microsoft.com) – 345 6456855



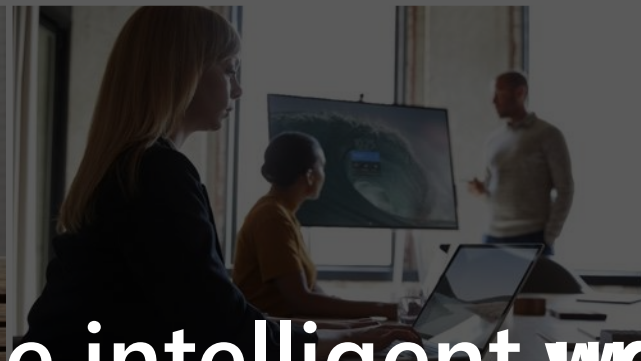
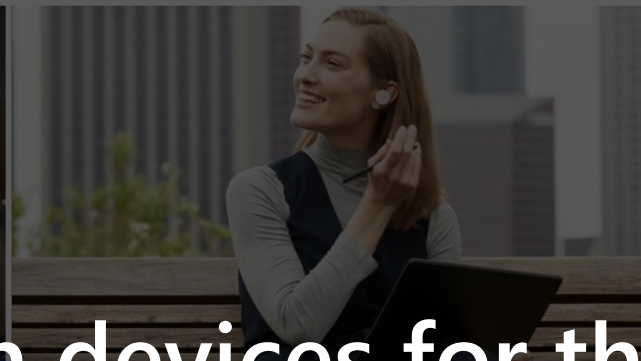
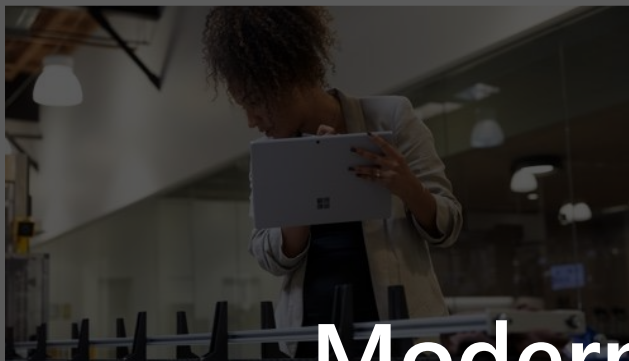
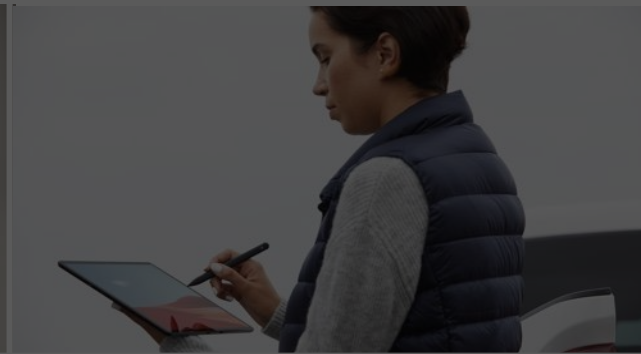
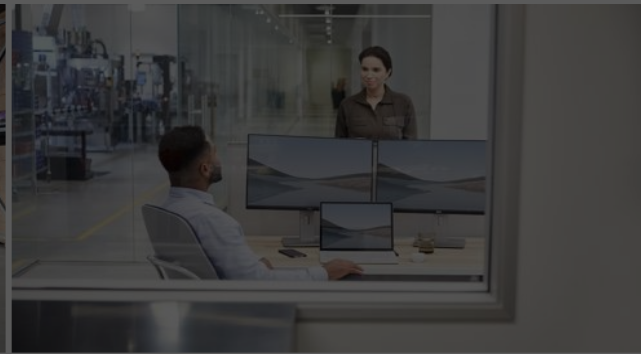
## Hub 2 S

[Teamwork without boundaries](#)

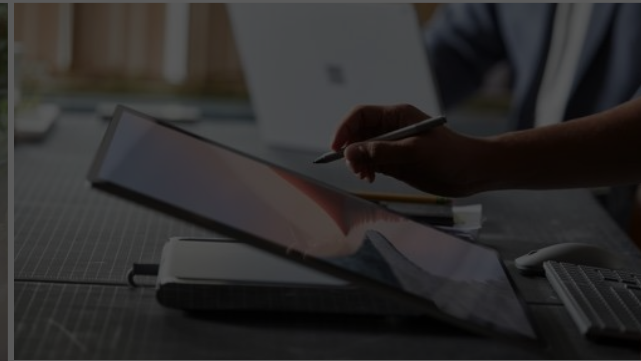
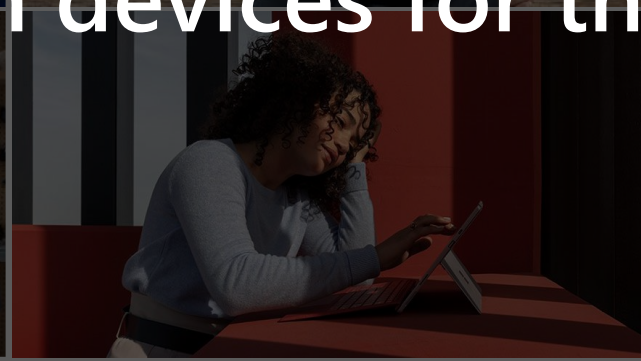
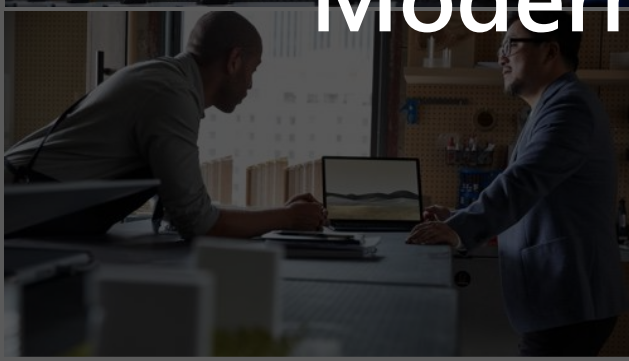
The revolutionary all-in-one digital whiteboard, meetings platform, and collaborative computing device







Modern devices for the intelligent workplace





Mario Rossi: dottorando che viaggia molto per i progetti di ricerca e che ha necessità di rimanere costantemente in contatto con il professore

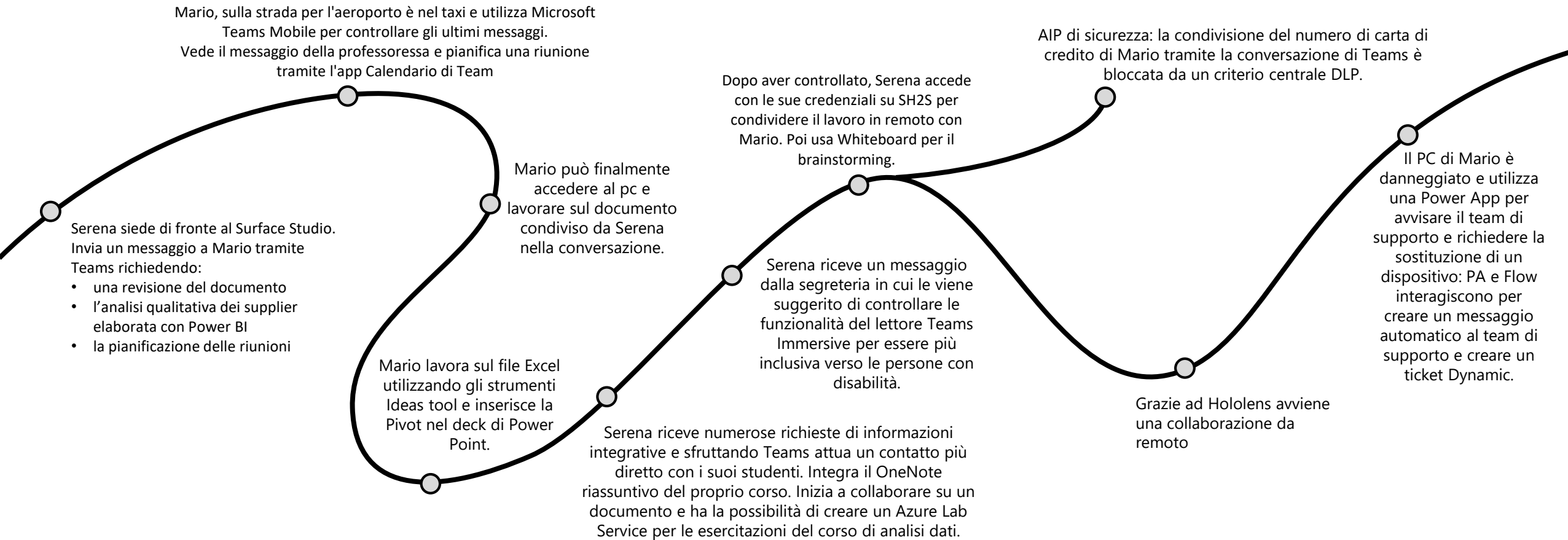


Serena Catalano: professoressa universitaria. Anche lei ha l'esigenza di rimanere in contatto con i dottorandi e i propri studenti

# Personas



# MW Journey – Potenza e proteggi il tuo ambiente di lavoro



## — Digital Touchpoints —

Mobile Working

Collaborazione per 365 giorni / Comunicazione / Sicurezza

Hololens + Power Platform